

LOC/DME I-GWQ 111.7 Chan 54	APP CRS 284°	Rwy Idg 28R 11236 28L 10275 TDZE 13 Apt Elev 13
---	------------------------	---

ILS or LOC RWY 28R

SAN FRANCISCO INTL (SFO)

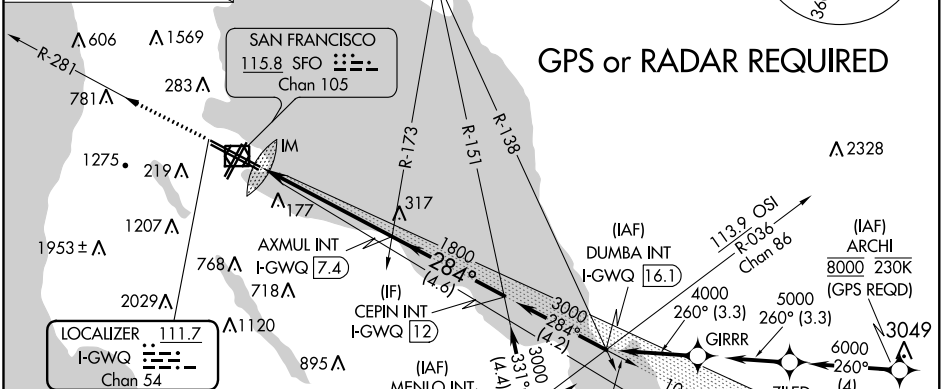
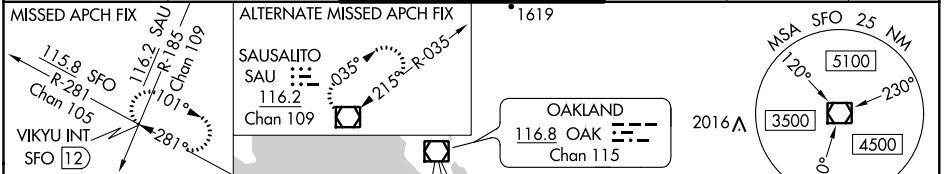
⚠ Circling NA to Rwy 10L, 10R, 19L, and 19R. Circling to Rwy 1L, 1R NA at night. Inop table does not apply to Sidestep R28L. For inop ALSF increase S-LOC 28R Cat C and D visibility to 1 1/2 mile. Missed approach requires minimum climb of 350 feet per NM to 1900; if unable to meet climb gradient, see ILS or LOC RWY 28L. Simultaneous approach authorized with ILS or LOC RWY 28L. Simultaneous operations require use of vertical guidance: maintain last assigned altitude until established on glide slope.

ALSF-2 Rwy 28R

MALS Rwy 28L

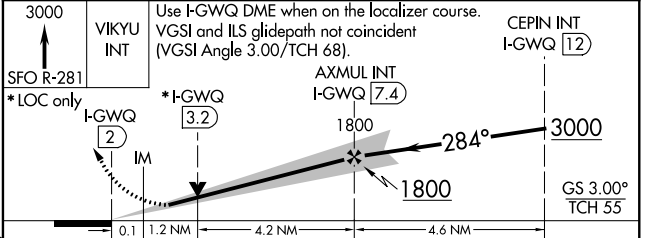
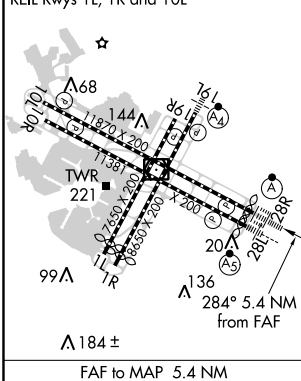
MISSED APPROACH: Climb to 3000 on SFO VOR/DME R-281 to VIKYU INT/SFO 12 DME and hold.

D-ATIS 113.7 115.8 118.85	NORCAL APP CON 134.5 338.2	SAN FRANCISCO TOWER 120.5 269.1	GND CON 121.8	CLNC DEL 118.2	CPDLC
-------------------------------------	--------------------------------------	---	-------------------------	--------------------------	-------



GPS or RADAR REQUIRED

ELEV 13	TDZE 28R 13
HIRL all Rwys	TDZE 28L 13
TDZ/CL Rwy 19L and 28R	
REIL Rwy 1L, 1R and 10L	



CATEGORY	A	B	C	D
S-ILS 28R	213/18 200 (200-1/2)			
S-LOC 28R	480/24	467 (500-1/2)	480/50	467 (500-1)
SIDESTEP 28L	480/55	467 (500-1 1/4)	480-1 1/2	467 (500-1 1/2)
C CIRCLING	640-1 627 (700-1)	960-1 1/4 947 (1000-1 1/4)	1560-3 1547 (1600-3)	NA

SW-2, 01 FEB 2018 to 01 MAR 2018

SW-2, 01 FEB 2018 to 01 MAR 2018